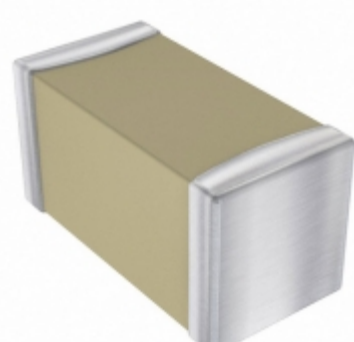


EMK021BJ471KK5W



Images are for reference only.
See Product Specifications for product details.
Buy EMK021BJ471KK5W with confidence from
Component-World.HK, 1 Year Warranty

TAIYO YUDEN

Part Number: [EMK021BJ471KK5W](#)
Manufacturer: [Taiyo Yuden](#)
Description: CAP CER 470PF 16V X5R 008004
Data sheet: [MLCC Capacitors Catalog](#)
[EMK021BJ471KK-W Spec Sheet](#)

RoHS Status: Lead free / RoHS Compliant
Ship From: Hong Kong
Shipment Way: DHL/Fedex/TNT/UPS/EMS

[Request For Quotation](#)

PRODUCT PARAMETER

Part Number	EMK021BJ471KK5W	Manufacturer	Taiyo Yuden
Description	CAP CER 470PF 16V X5R 008004	Lead Free Status / RoHS Status	Lead free / RoHS Compliant
Quantity Available	521570 pcs	Data sheet	MLCC Capacitors Catalog EMK021BJ471KK-W Spec Sheet
Category	Capacitors	Voltage - Rated	16V
Tolerance	±10%	Thickness (Max)	0.006" (0.14mm)
Temperature Coefficient	X5R	Size / Dimension	0.010" L x 0.005" W (0.25mm x 0.13mm)
Series	M	Ratings	-
Packaging	Tape & Reel (TR)	Package / Case	008004 (0201 Metric)
Other Names	587-4846-2 RM EMK021 BJ471KK5W	Operating Temperature	-55°C ~ 85°C
Mounting Type	Surface Mount, MLCC	Moisture Sensitivity Level (MSL)	1 (Unlimited)
Manufacturer Standard Lead Time	19 Weeks	Lead Style	-
Lead Spacing	-	Lead Free Status / RoHS Status	Lead free / RoHS Compliant
Height - Seated (Max)	-	Features	-
Detailed Description	470pF ±10% 16V Ceramic Capacitor X5R 008004 (0201 Metric)	Capacitance	470pF
Applications	General Purpose		

Component-World.com is a Reliable Stocking Distributor of Electronic Components. We specialize in all Taiyo Yuden series electronic components. We have 521570 pieces of Taiyo Yuden EMK021BJ471KK5W in stock available now. Request a quote from electronics components distributor at Component-World.com, our sales team will contact you within 24 hours.
RFQ Email: info@Components-World.com

RELATED PRODUCTS

	Part#: EMK021BJ221KK-W Description: CAP CER 220PF 16V X5R 008004	Manufacturers: Taiyo Yuden	RFQ
	Part#: EMK021BJ102KK5W Description: CAP CER 1000PF 16V X5R 008004	Manufacturers: Taiyo Yuden	RFQ
	Part#: EMK042B7681KC-W Description: CAP CER 680PF 16V X7R 01005	Manufacturers: Taiyo Yuden	RFQ
	Part#: EMK021BJ471KK-W Description: CAP CER 470PF 16V X5R 008004	Manufacturers: Taiyo Yuden	RFQ
	Part#: EMK042B7331MC-W Description: CAP CER 330PF 16V X7R 01005	Manufacturers: Taiyo Yuden	RFQ
	Part#: EMK042CG010CC-F Description: CAP CER 1PF 16V NP0 01005	Manufacturers: Taiyo Yuden	RFQ
	Part#: EMK042B7471MC-W Description: CAP CER 470PF 16V X7R 01005	Manufacturers: Taiyo Yuden	RFQ
	Part#: EMK042B7151MC-W Description: CAP CER 150PF 16V X7R 01005	Manufacturers: Taiyo Yuden	RFQ
	Part#: EMK042B7681MC-W Description: CAP CER 680PF 16V X7R 01005	Manufacturers: Taiyo Yuden	RFQ
	Part#: EMK042B7221KC-W Description: CAP CER 220PF 16V X7R 01005	Manufacturers: Taiyo Yuden	RFQ
	Part#: EMK042B7102KC-W Description: CAP CER 1000PF 16V X7R 01005	Manufacturers: Taiyo Yuden	RFQ
	Part#: EMK042B7151KC-W Description: CAP CER 150PF 16V X7R 01005	Manufacturers: Taiyo Yuden	RFQ
	Part#: EMK042B7221MC-W Description: CAP CER 220PF 16V X7R 01005	Manufacturers: Taiyo Yuden	RFQ
	Part#: EMK021BJ102KK-W Description: CAP CER 1000PF 16V X5R 008004	Manufacturers: Taiyo Yuden	RFQ
	Part#: EMK042B7102MC-W Description: CAP CER 1000PF 16V X7R 01005	Manufacturers: Taiyo Yuden	RFQ
	Part#: EMK042B7101MC-W Description: CAP CER 100PF 16V X7R 01005	Manufacturers: Taiyo Yuden	RFQ
	Part#: EMK042B7471KC-W Description: CAP CER 470PF 16V X7R 01005	Manufacturers: Taiyo Yuden	RFQ
	Part#: EMK021BJ221KK5W Description: CAP CER 220PF 16V X5R 008004	Manufacturers: Taiyo Yuden	RFQ
	Part#: EMK042B7101KC-W Description: CAP CER 100PF 16V X7R 01005	Manufacturers: Taiyo Yuden	RFQ
	Part#: EMK042B7331KC-W Description: CAP CER 330PF 16V X7R 01005	Manufacturers: Taiyo Yuden	RFQ

Related keywords for EMK021BJ471KK5W

Taiyo Yuden EMK021BJ471KK5W	EMK021BJ471KK5W distributor	EMK021BJ471KK5W supplier	EMK021BJ471KK5W price
EMK021BJ471KK5W download datasheet	EMK021BJ471KK5W datasheet	EMK021BJ471KK5W stock	buy EMK021BJ471KK5W
Taiyo Yuden EMK021BJ471KK5W			